



New
Classic
FURNITURE

ASSEMBLY INSTRUCTIONS

B1684-050 NOCTURNE DRESSER

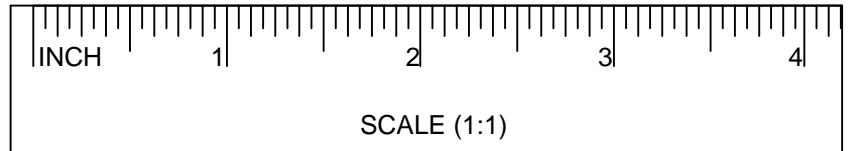
Thank you for purchasing this quality product. Be sure to check all packing materials carefully for small parts, which may have come loose inside the carton during shipment. Identify and count all items and compare with the parts list and/or hardware list shown.

PARTS LIST

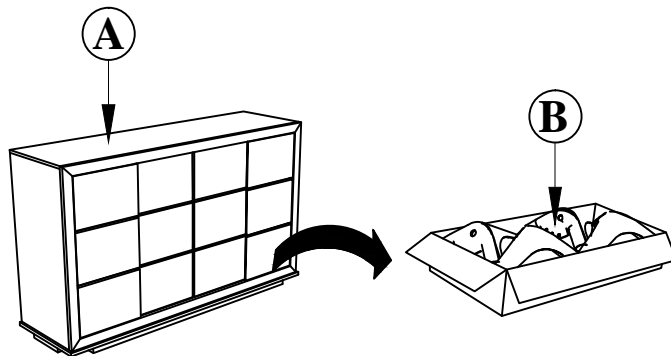
NO	COMPONENT	DRAWING	QTY
A	Dresser		1 pc
B	Metal Leg		4 pcs

HARDWARE LIST

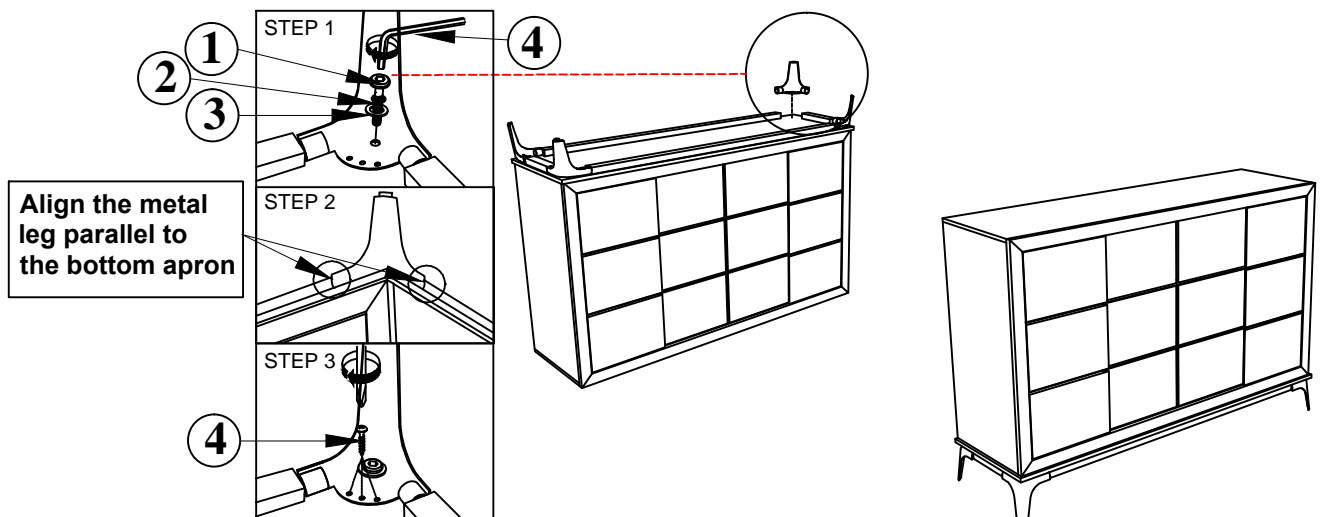
NO	COMPONENT	DRAWING	QTY
1	JCBC M6 x 5/8" Blk		4 pcs
2	Spring Washer 1/4" Blk		4 pcs
3	Flat Washer 1/4"IDx6/8"OD Blk		4 pcs
4	Allen Key M4 x 2 9/16" Blk		1 pc
5	Pan Head Chipboard Screw m3.5 x5/8" Blk		12 pcs



STEP 1 : Locate the Metal Legs (B) from the bottom drawer of the Nightstand (A).



STEP 2 : Place the Dresser (A) upside down on a flat and clean surface. Assemble the Metal Legs (B) to the Dresser (A) by using Allen Key (4) with hardware 1, 2, and 3. Then secure each Metal Legs (B) to the Dresser (A) by using a screwdriver with hardware 4.



COMPLETED ASSEMBLY

NOTE : MUST TIGHTEN SCREWS PERIODCALLY WITH USE SCREW WILL BECOME LOOSE CHECK TIGHTNESS OF ALL SCREW EVERY 6-8 WEEKS.